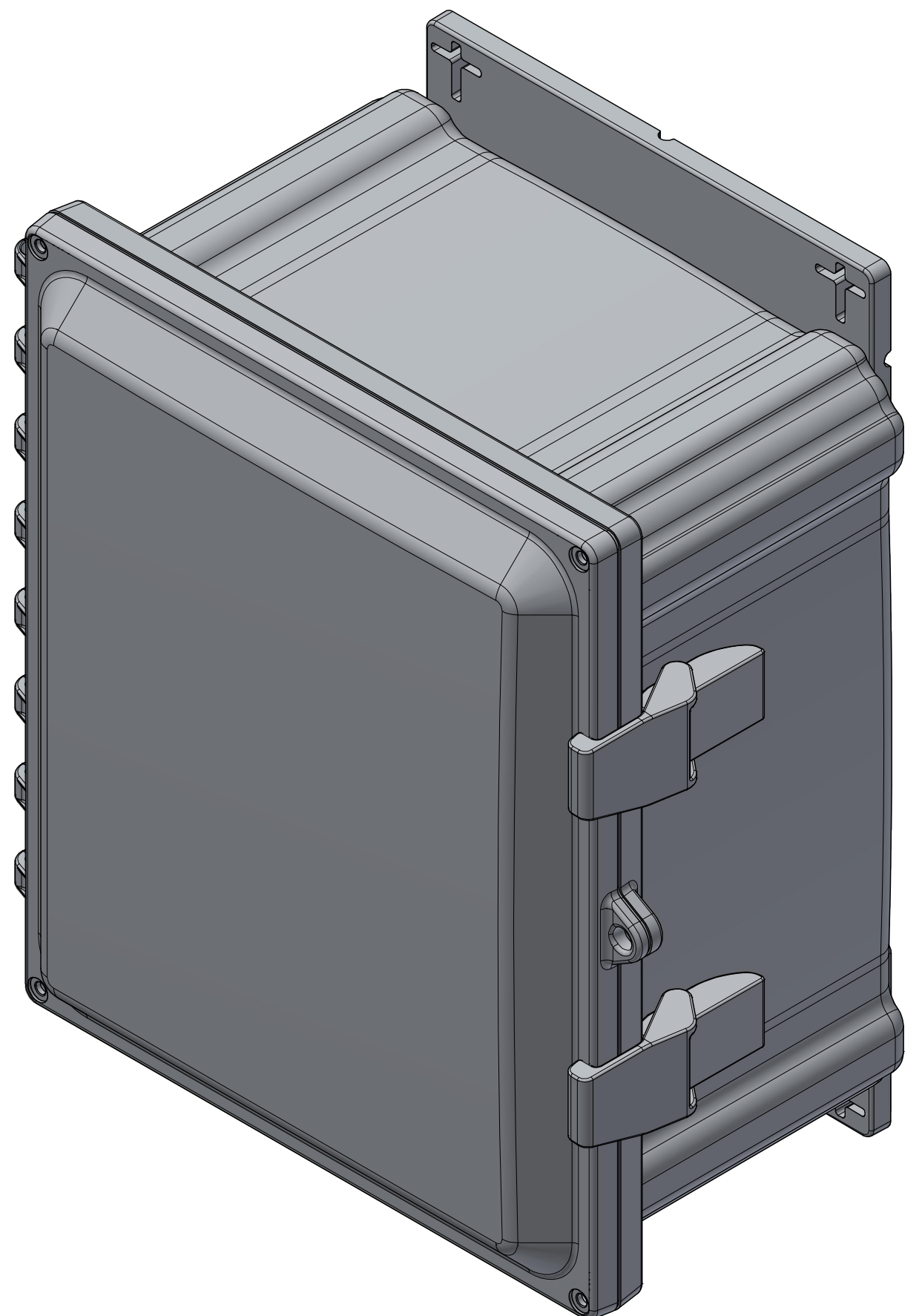


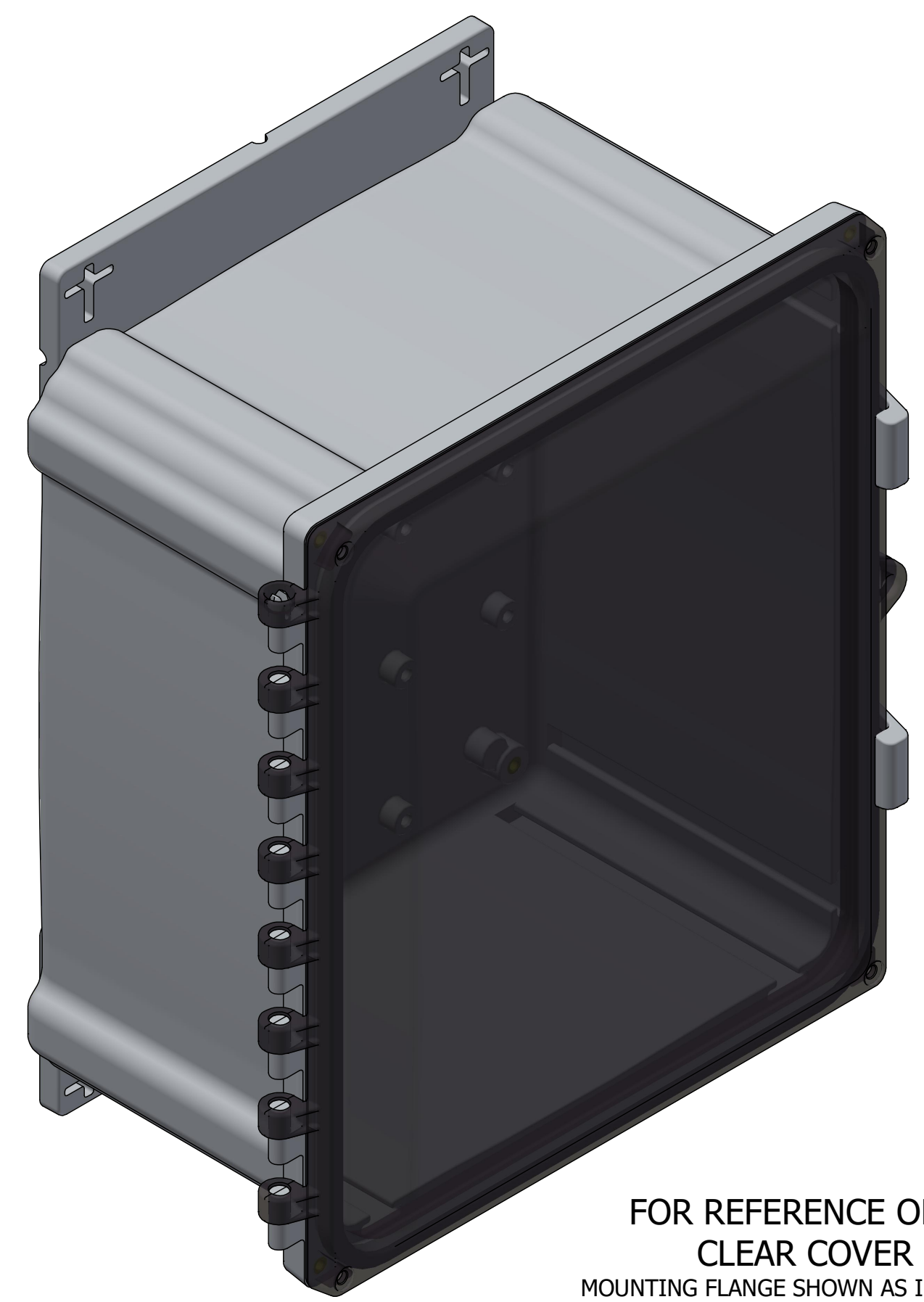
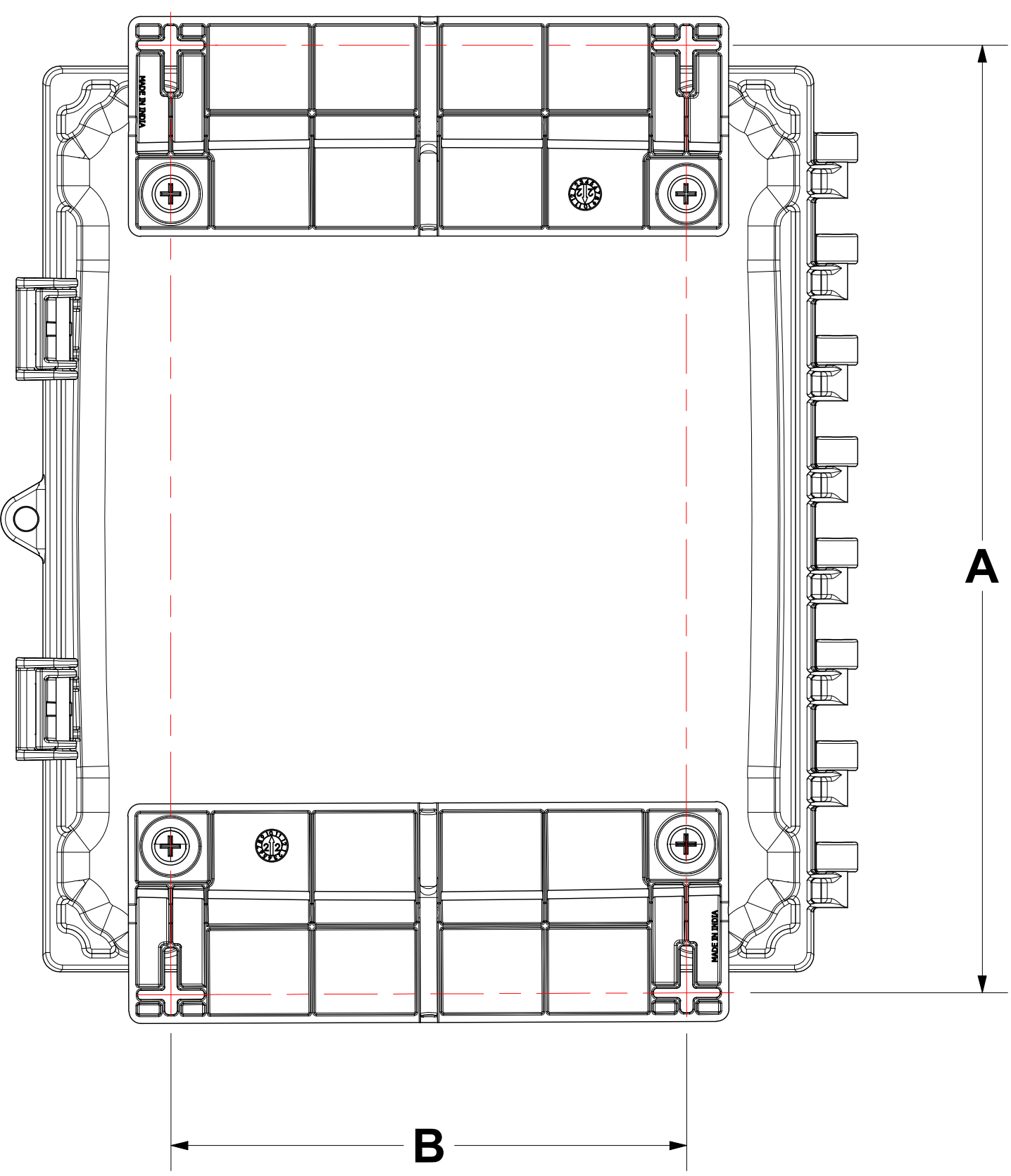
TABLE

ENCLOSURE	DIM "A"	DIM "B"	MOUNTING FLANGE KIT PART NUMBER (INCLUDED)	COVER TYPE	ENCLSOURE DETAIL DRAWING
PCF606	8.03	3.64	MFK6	OPAQUE	PC606
PCF606CC	8.03	3.64	MFK6	CLEAR	PC606CC
PCF806	10.03	3.64	MFK6	OPAQUE	PC806
PCF806CC	10.03	3.64	MFK6	CLEAR	PC806CC
PCF808	10.03	5.64	MFK8	OPAQUE	PC808
PCF808CC	10.03	5.64	MFK8	CLEAR	PC808CC
PCF1008	12.03	5.64	MFK8	OPAQUE	PC1008
PCF1008CC	12.03	5.64	MFK8	CLEAR	PC1008CC
PCF100806	12.03	5.64	MFK8	OPAQUE	PC10086
PCF100806CC	12.03	5.64	MFK8	CLEAR	PC100806CC
PCF1010	12.03	7.63	MFK10	OPAQUE	PC1010
PCF1010CC	12.03	7.63	MFK10	CLEAR	PC1010CC
PCF1210	14.03	7.63	MFK10	OPAQUE	PC1210
PCF1210CC	14.03	7.63	MFK10	CLEAR	PC1210CC
PCF1412	16.03	9.64	MFK12	OPAQUE	PC1412
PCF1412CC	16.03	9.64	MFK12	CLEAR	PC1412CC
PCF1614	18.03	11.64	MFK14	OPAQUE	PC1614
PCF1614CC	18.03	11.64	MFK14	CLEAR	PC1614CC
PCF1816	20.03	13.64	MFK16	OPAQUE	PC1816
PCF1816CC	20.03	13.64	MFK16	CLEAR	PC1816CC
PCF2016	22.03	13.64	MFK16	OPAQUE	PC2016
PCF2016CC	22.03	13.64	MFK16	CLEAR	PC2016CC

**NOTES**  
 1. REFERENCE ENCLOSURE DETAIL DRAWING NOTED IN TABLE FOR ALL ENCLOSURE DIMENSIONS



FOR REFERENCE ONLY  
 OPAQUE COVER  
 MOUNTING FLANGE SHOWN AS INSTALLED



FOR REFERENCE ONLY  
 CLEAR COVER  
 MOUNTING FLANGE SHOWN AS INSTALLED

THIS DRAWING IS THE SOLE AND EXCLUSIVE PROPERTY OF ROBROY ENCLOSURES. NO PART OF THIS DRAWING MAY BE REPRODUCED, DISTRIBUTED, OR PUBLICALLY DISPLAYED IN ANY FORM OR BY ANY MEANS WITHOUT THE EXPRESS WRITTEN PERMISSION OF ROBROY ENCLOSURES. ALL RIGHTS RESERVED. UNDER THE COPYRIGHT LAWS. COPYRIGHT © 2023 ROBROY ENCLOSURES

<b>SPECIAL REQUIREMENTS</b>		NEMA 250: TYPE 1, 3R, 4, 4X, 12, 6P IEC 60529: IP66, IP68	STANDARD P/N: PCF	ALL DIMENSIONS ARE IN INCHES UNLESS OTHERWISE SPECIFIED	TOLERANCES UNLESS SPECIFIED	.XX ± 0.03	.XXX ± 0.010
<b>ASSEMBLY:</b> 1. (1) ACCESSORY KIT (WPPCACKKITNOFT) SHALL BE PACKAGED LOOSELY INSIDE ENCLOSURE <b>HARDWARE INCLUDED:</b> - (4) #10-32 x 5/8 PAN HEAD PHILLIPS MACHINE SCREW (RMSC10/32X5/8SS) - (4) #10-32 x 3/8 PAN HEAD SCREW (RMSC10/32X3/8ZN) - (4) #10 WASHER (RMWAS10ZN) (1) MOUNTING FLANGE KIT SHALL BE PACKAGED LOOSELY INSIDE THE ENCLOSURE SEE TABLE FOR PART NUMBER <b>HARDWARE INCLUDED:</b> - (4) #1/4-20 x 1/2 FLAT HEAD PHILLIPS MACHINE SCREW (RMSC1/4-20X1/2FLPH) - (2) PC FULL FLANGE - (1) INSTALLATION INSTRUCTIONS 2. (1) STYROFOAM SHEET SHALL BE PLACED ON TOP OF COVER INSIDE CARTON		MATERIAL: POLYCARBONATE	CUSTOMER DWG:	<b>STAHLIN</b> A ROBROY ENCLOSURES™ BRAND Robroy Enclosures 500 Maple Street Belding, Michigan 48809 Phone: 616-794-0700 Fax: 616-749-3378			
REVISION HISTORY REV DESCRIPTION DATE ENG -		DRAWN BY BH DATE 1/4/23 SCALE DO NOT SCALE	CUSTOMER DESCRIPTION STANDARD ENCLOSURE PART NUMBER FEPCF	DWG PCF-TABLE			